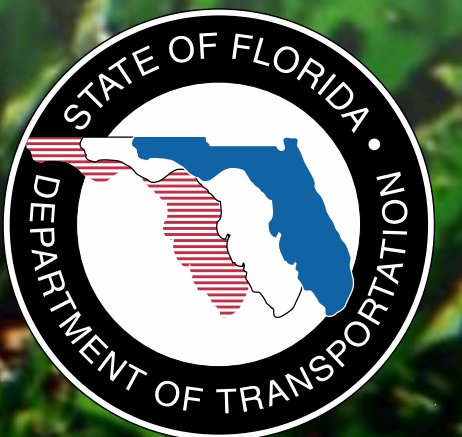




A Regional Transportation Solution

**East Lake-NW Orange County
Elected Officials Committee
Jan. 10, 2014**



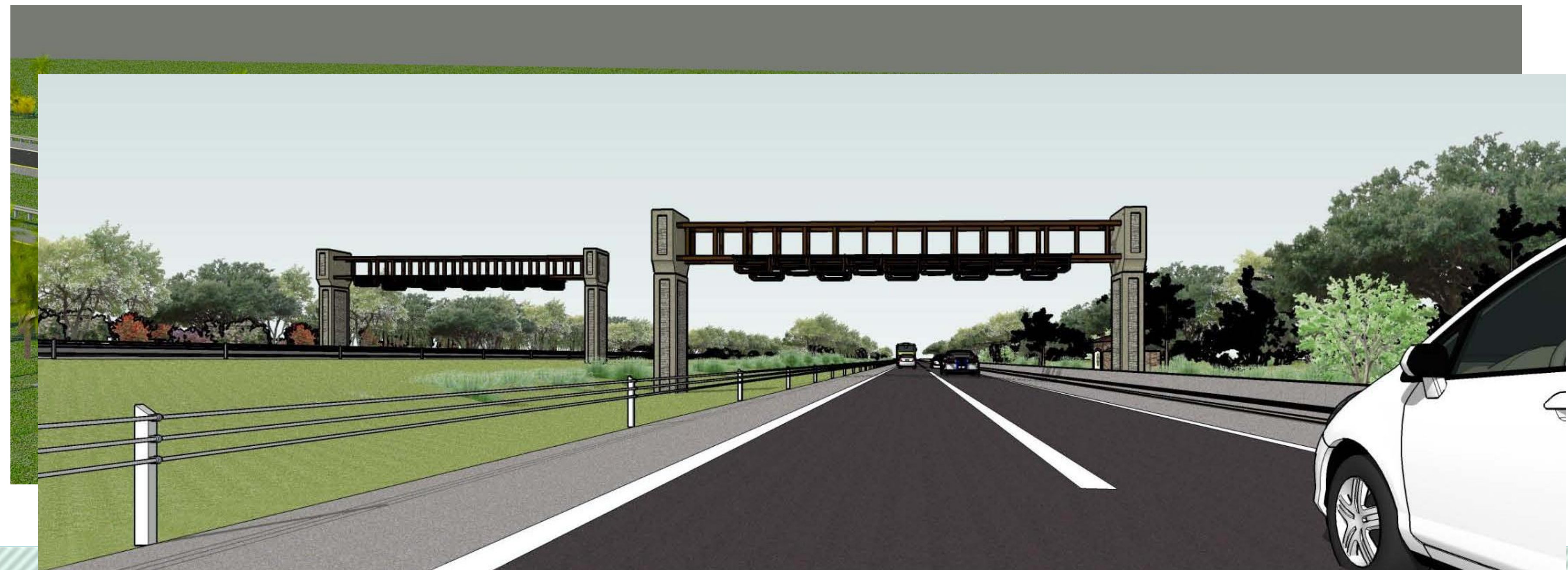
WEKIVA PARKWAY



WEKIVA PARKWAY

All Electronic Tolling (AET)

- **First in Central Florida**
- **No Toll Plazas (SUNPass or E-Pass)**
- **Improved Traffic Flow Efficiency**
- **Enhanced Safety**
- **Reduced Noise**
- **Toll Costs Pending**



Other Key Benefits

Environmental:

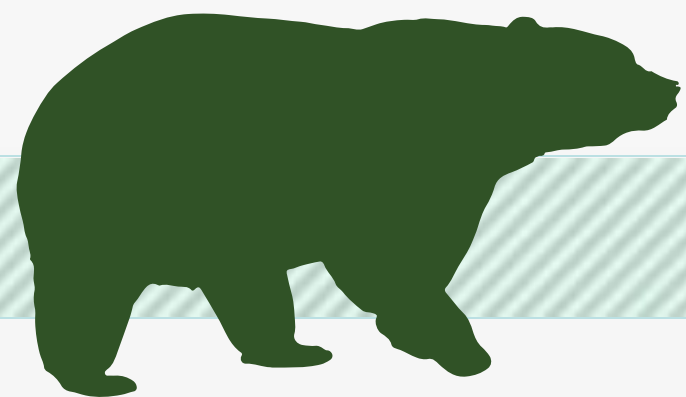
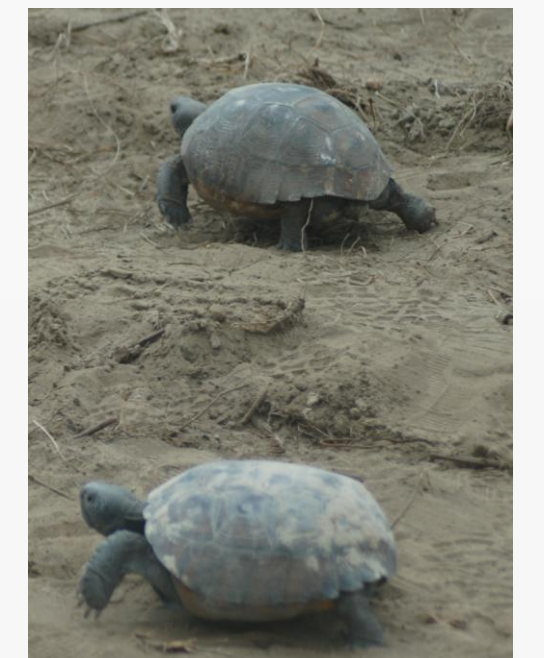
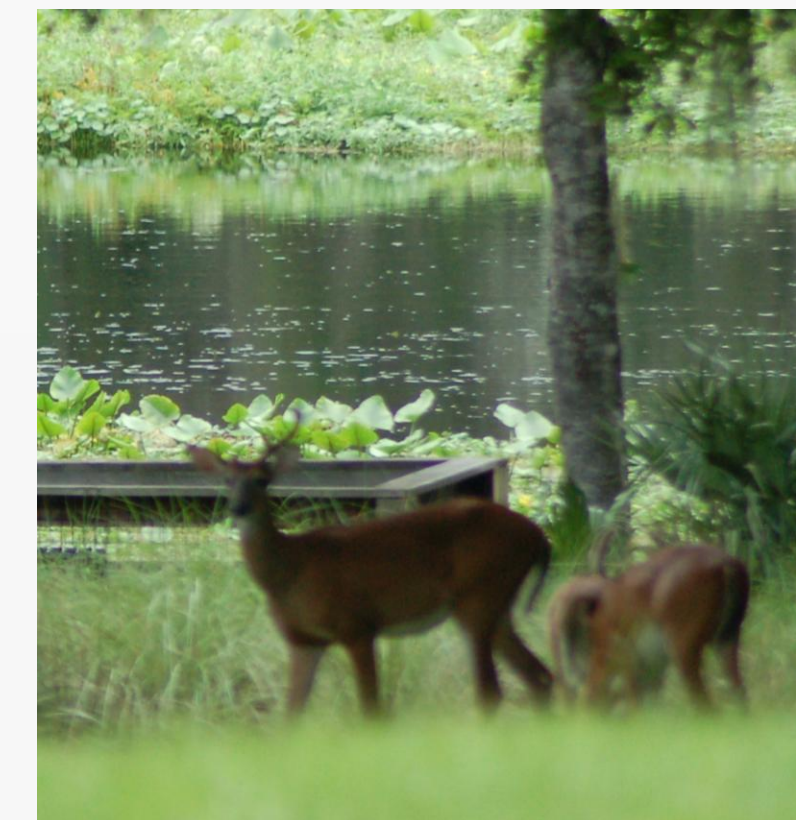
- **Conservation: 3,400 Acres**
- **Elevated: Reduce Vehicle vs. Wildlife Accidents**
- **Wildlife Bridges**
- **Few Interchanges**



Economic:

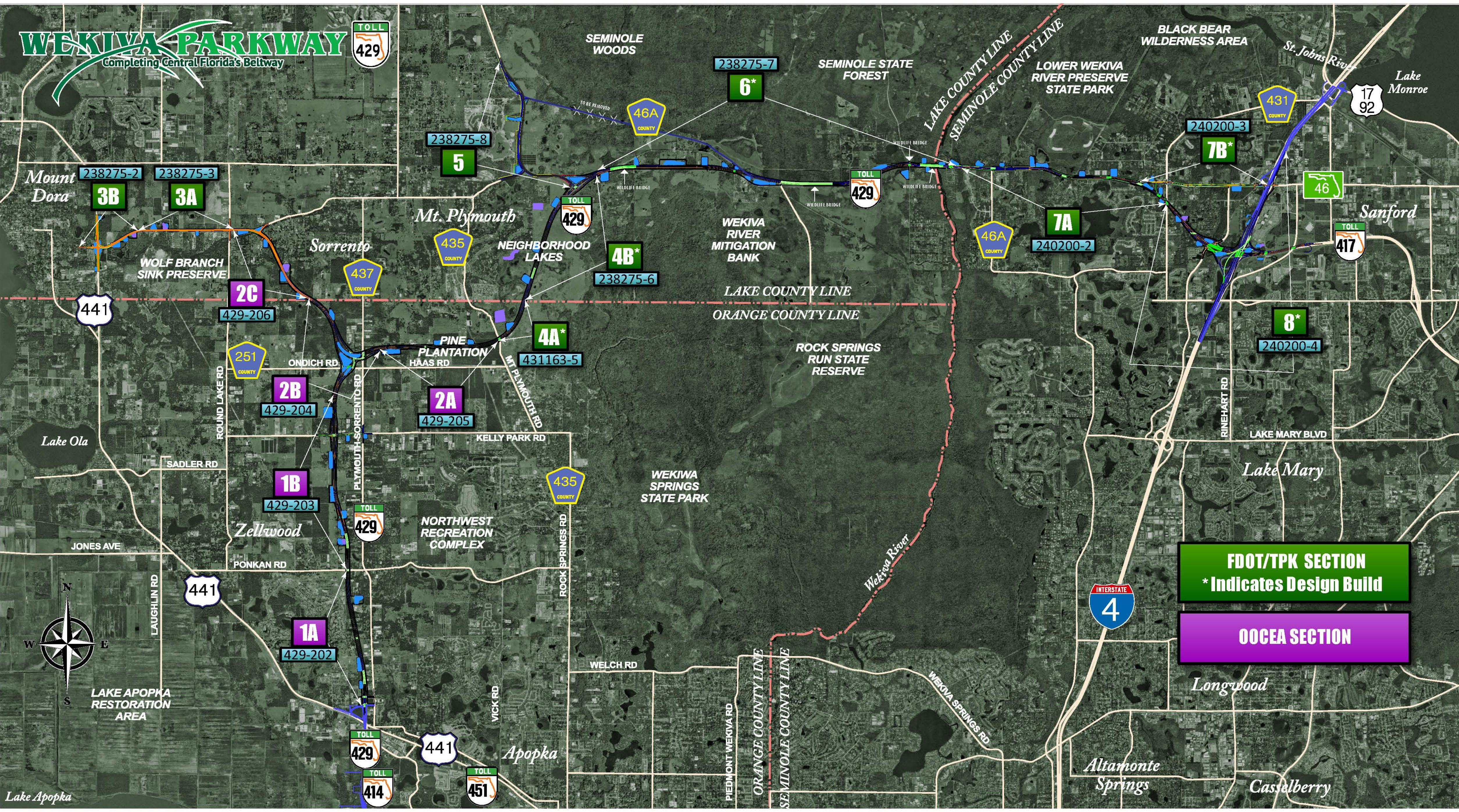
- **Design & Construction – 35,825 Jobs**
(Direct & Indirect)

*Job Multiplier Source: Federal Highway Administration (FHWA) Employment Impacts of Highway Infrastructure Investment; Updated March 2010



WEKIVA PARKWAY

Completing Central Florida's Beltway



FDOT/TPK SECTION
* Indicates Design Build

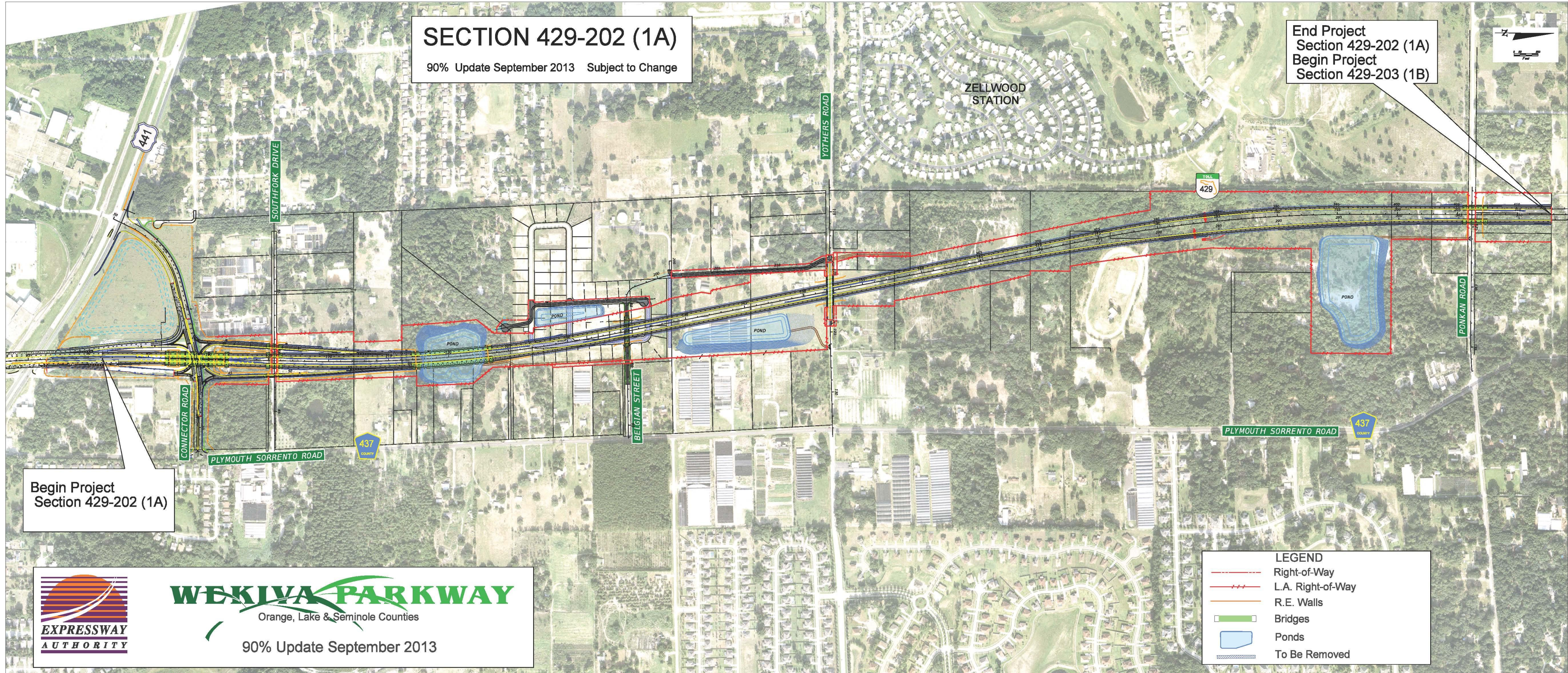
OOCEA SECTION

Design Status

SECTION	MILESTONE	SUBMITTAL SCHEDULE
1A & 1B	100%	Early 2014
2A	90%	Spring 2014
2B	90%	Feb. 2014
2C	60%	March 2014
3A	30%	Dec. 2013
3B	60%	Dec. 2013
5	60%	March 2014
6	30%	Feb.- March 2014
7A	30%	Early 2014
7B & 8	Design-Build	



Section 1A



SECTION 429-202 (1A)

90% Update September 2013 Subject to Change

End Project
Section 429-202 (1A)
Begin Project
Section 429-203 (1B)

Begin Project
Section 429-202 (1A)



WEKIVA PARKWAY

Orange, Lake & Seminole Counties

90% Update September 2013

LEGEND	
	Right-of-Way
	L.A. Right-of-Way
	R.E. Walls
	Bridges
	Ponds
	To Be Removed

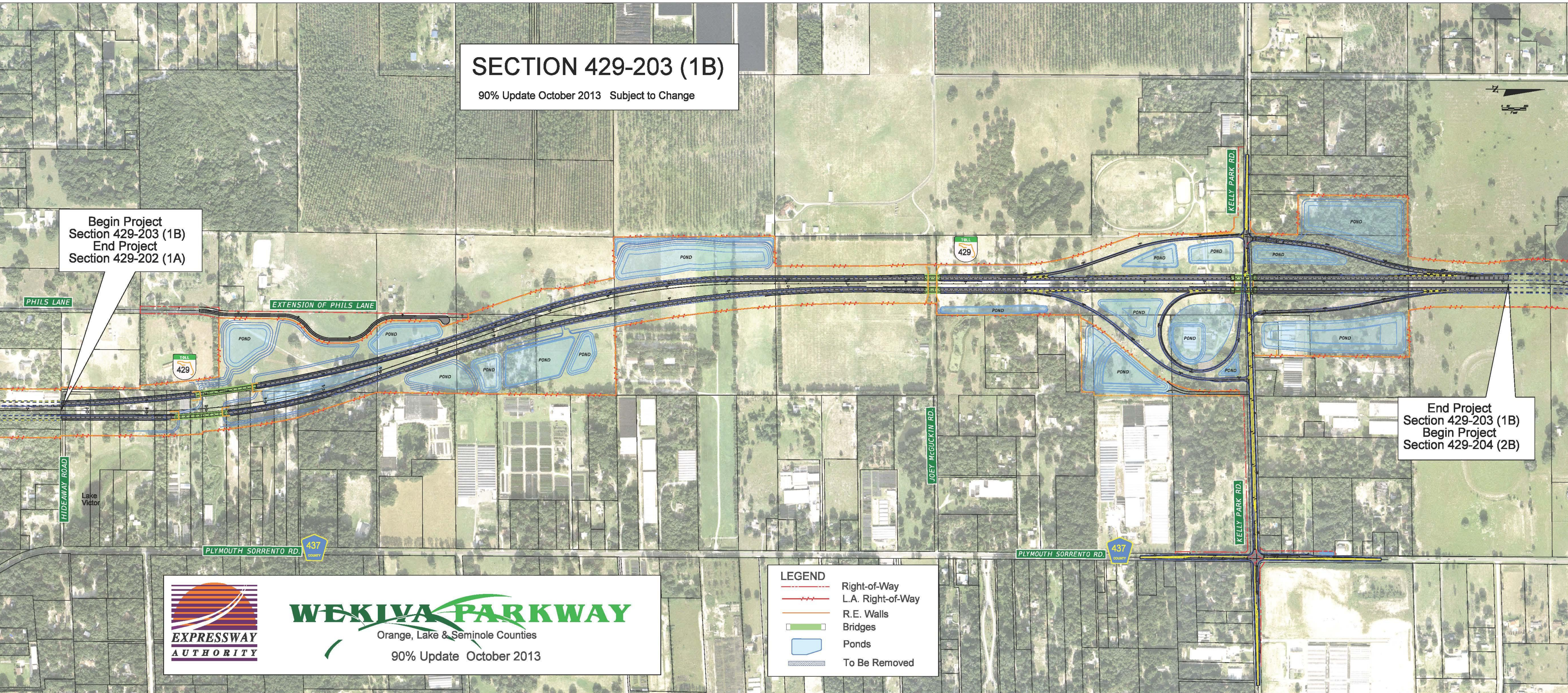
Section 1B

SECTION 429-203 (1B)

90% Update October 2013 Subject to Change

Begin Project
Section 429-203 (1B)
End Project
Section 429-202 (1A)

End Project
Section 429-203 (1B)
Begin Project
Section 429-204 (2B)



WEKIIVA PARKWAY
Orange, Lake & Seminole Counties
90% Update October 2013

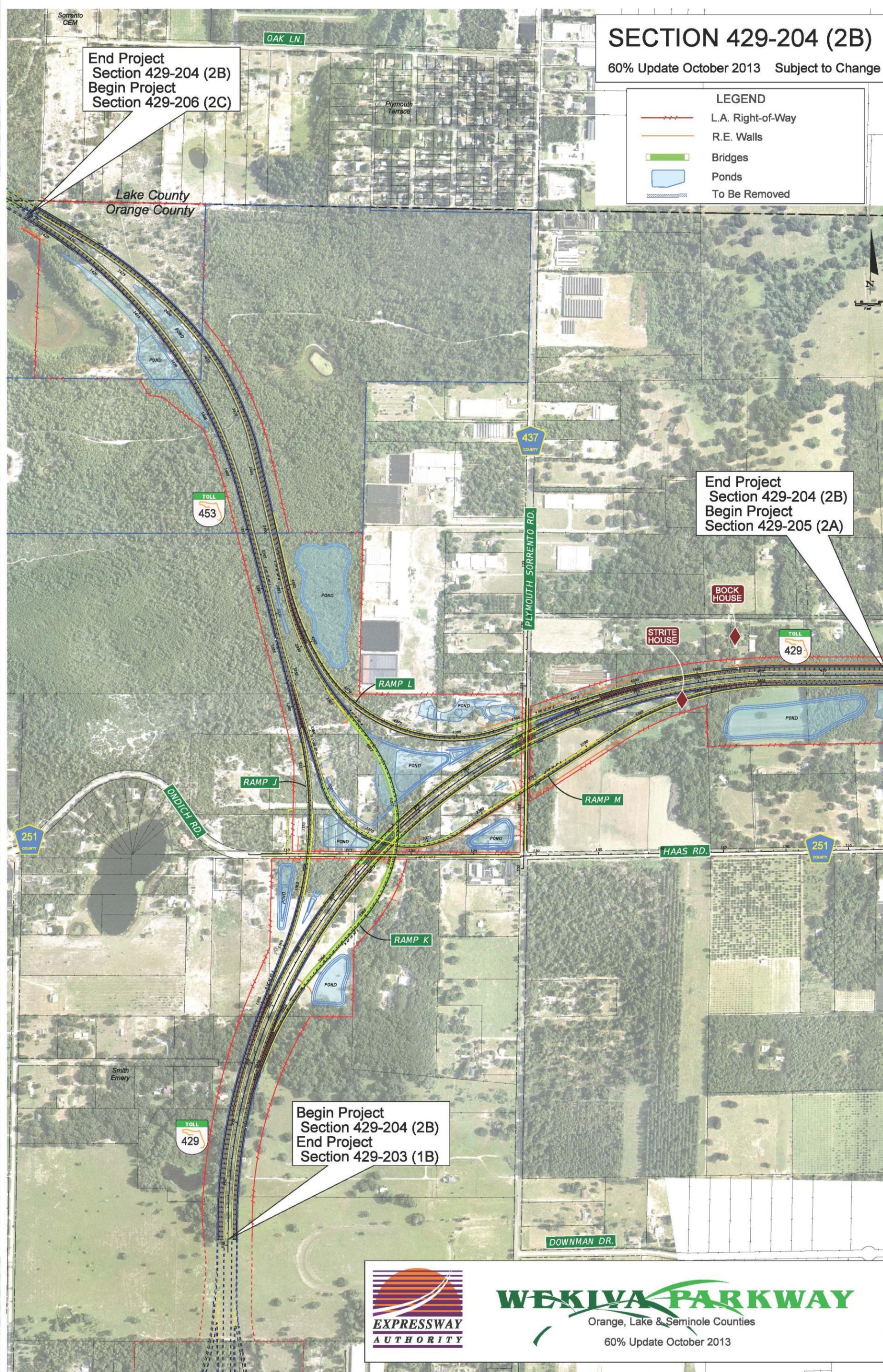
LEGEND	
	Right-of-Way
	L.A. Right-of-Way
	R.E. Walls
	Bridges
	Ponds
	To Be Removed

Construction Schedule

SECTION	START	FINISH
1A & 1B	Late 2014-Early 2015	Late 2016
2A	2017	2019
2B	2017	2019
2C	2017	2019
3A	2017	2019
3B	2017	2019
4A & 4B	Feb. 2013	Late 2014
5	2017	2019
6	2017	2020
7A	2017	2020
7B & 8	2017-2018	2020-2021

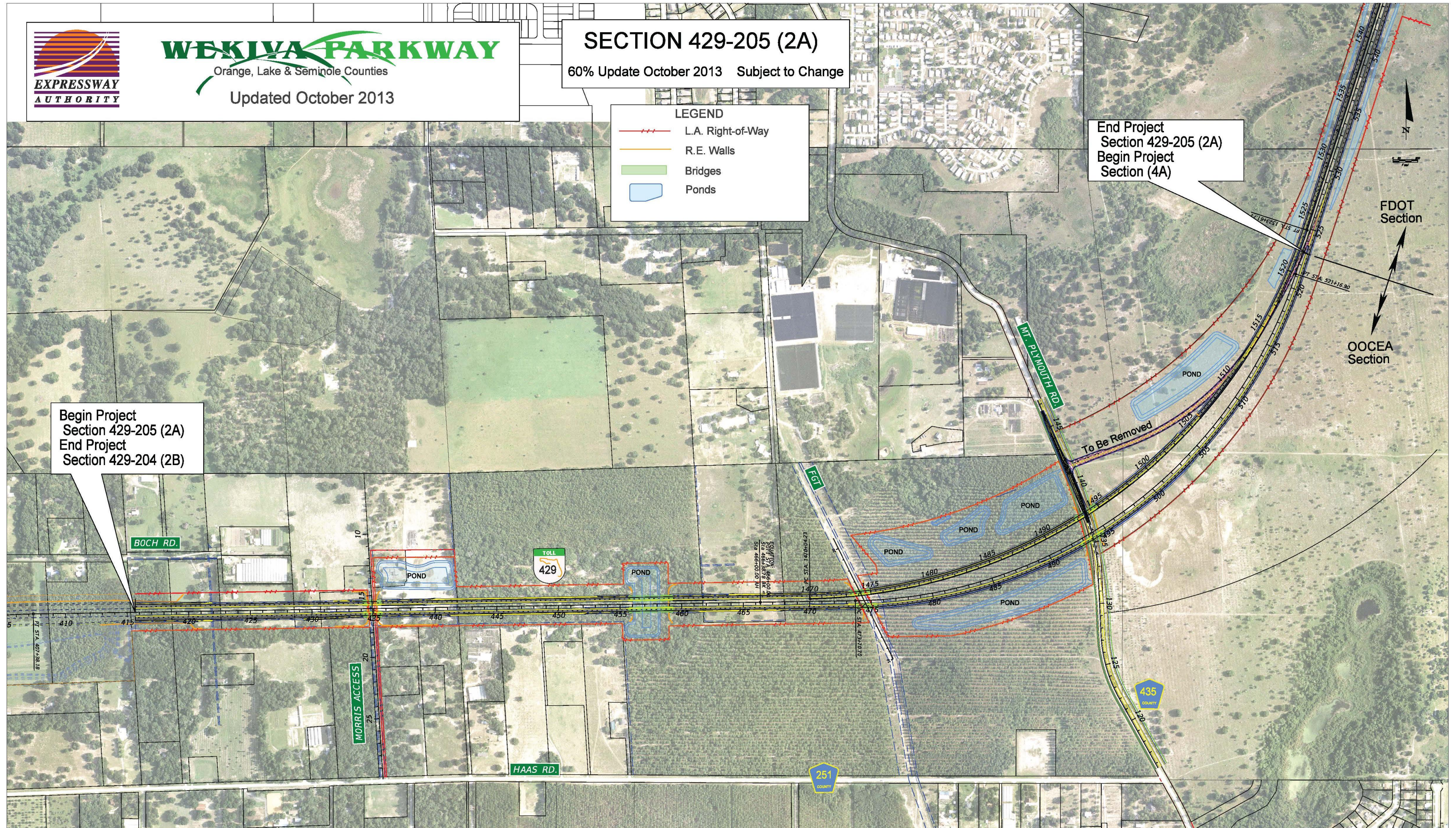
***Subject to
Change**

Section 2B



WEKIIVA PARKWAY
Orange, Lake & Seminole Counties
60% Update October 2013

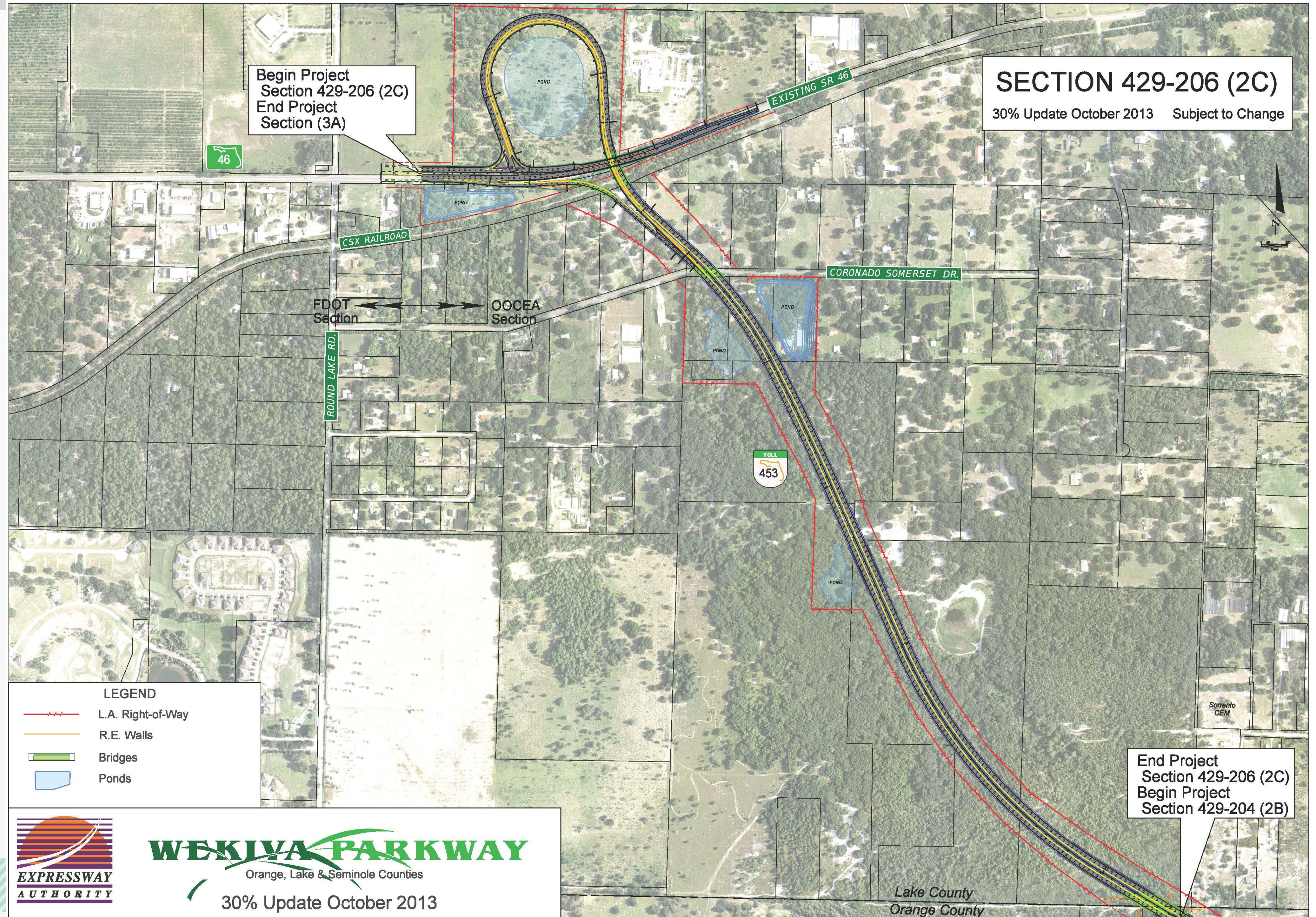
Section 2A



Section 2C

SECTION 429-206 (2C)

30% Update October 2013 Subject to Change



Begin Project
Section 429-206 (2C)
End Project
Section (3A)

FDOT Section OOCEA Section

End Project
Section 429-206 (2C)
Begin Project
Section 429-204 (2B)

LEGEND

- L.A. Right-of-Way
- R.E. Walls
- Bridges
- Ponds

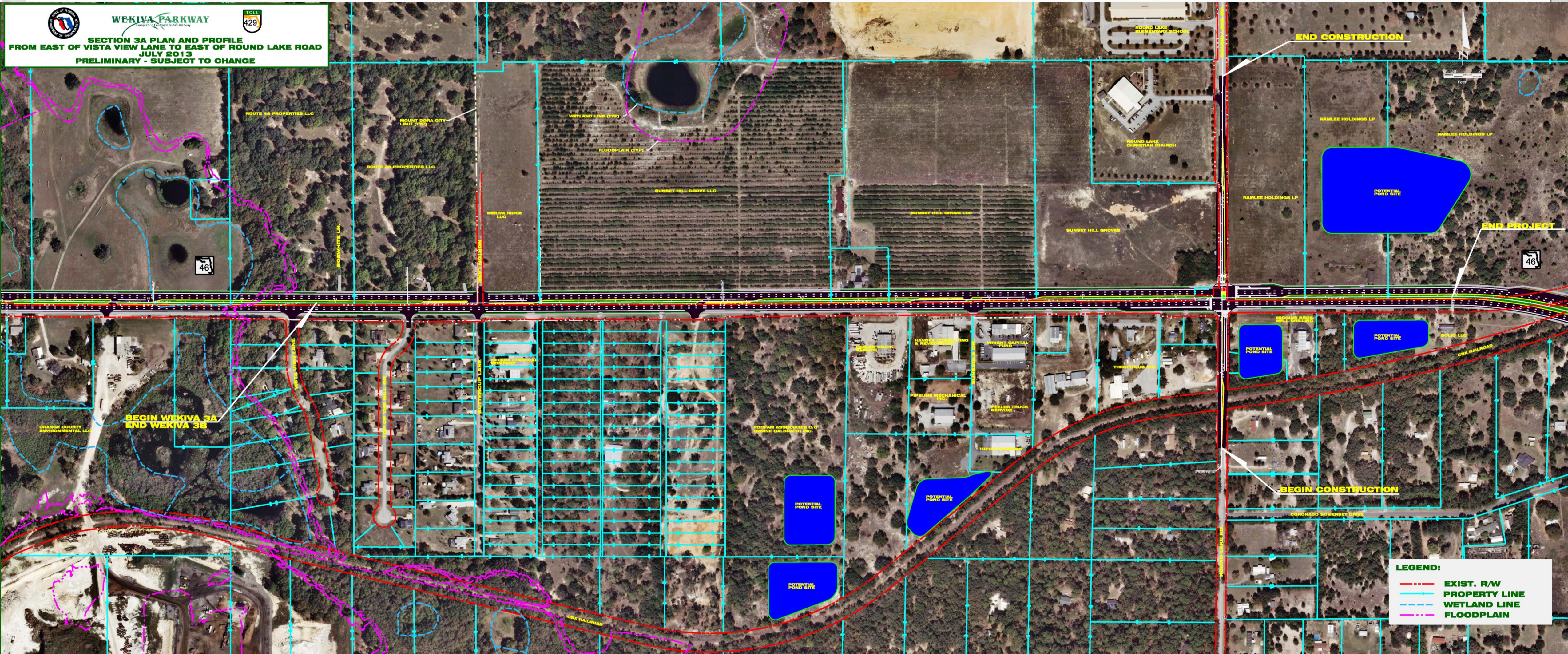
WEKIIVA PARKWAY
Orange, Lake & Seminole Counties
30% Update October 2013

Lake County
Orange County

Section 2 – Public Meeting Nov. 7, 2013



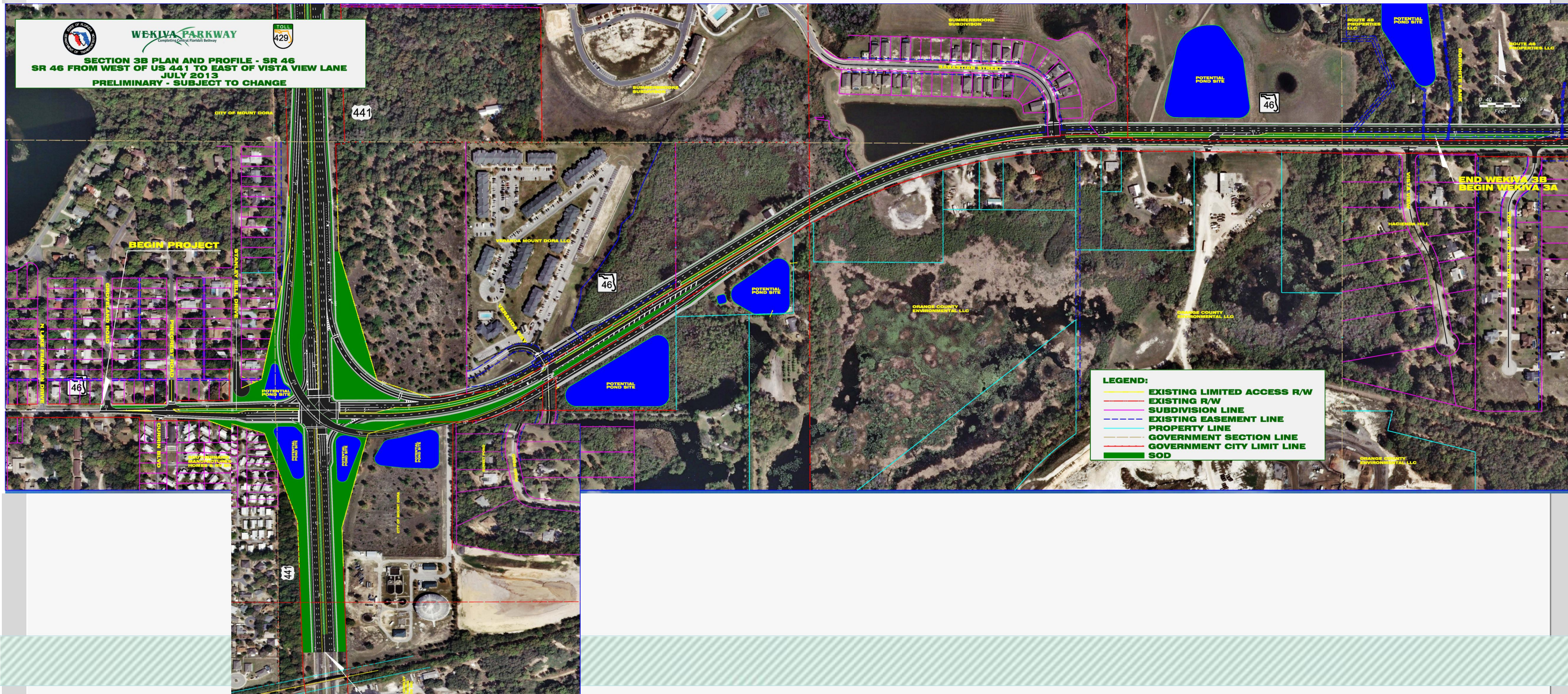
Section 3A (Old)



Section 3A (New)



Section 3B



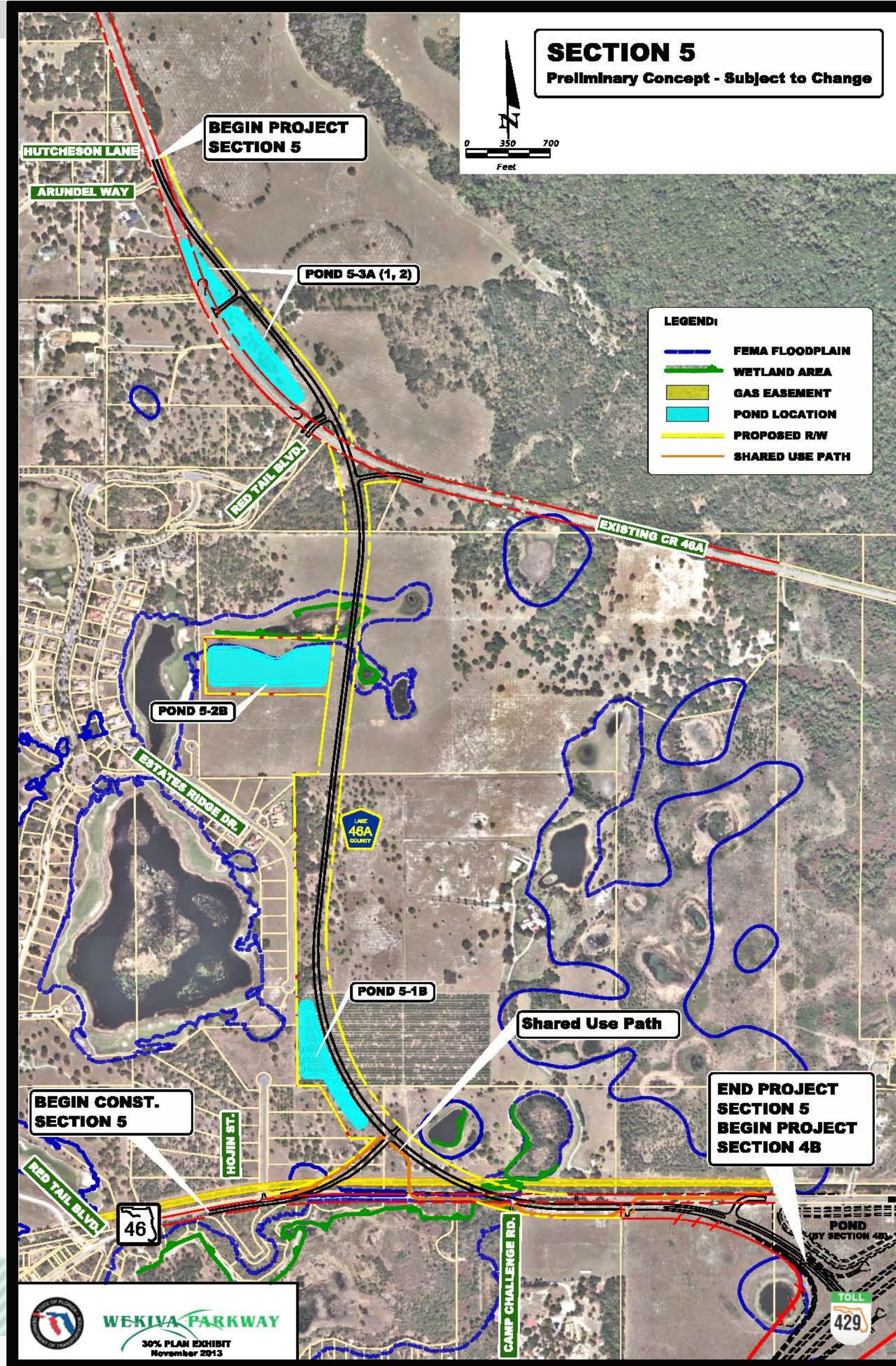
Section 4A & 4B



Section 4A & 4B



Section 5



Section 6



SECTION 238275-7 (6)

Preliminary Concept Subject to Change

Begin Project
SECTION 238275-7 (6)
End Project
SECTION 238275-6 (4B)

Begin Project
SECTION 238275-7 (6)
End Project
SECTION 240200-2 (7A)

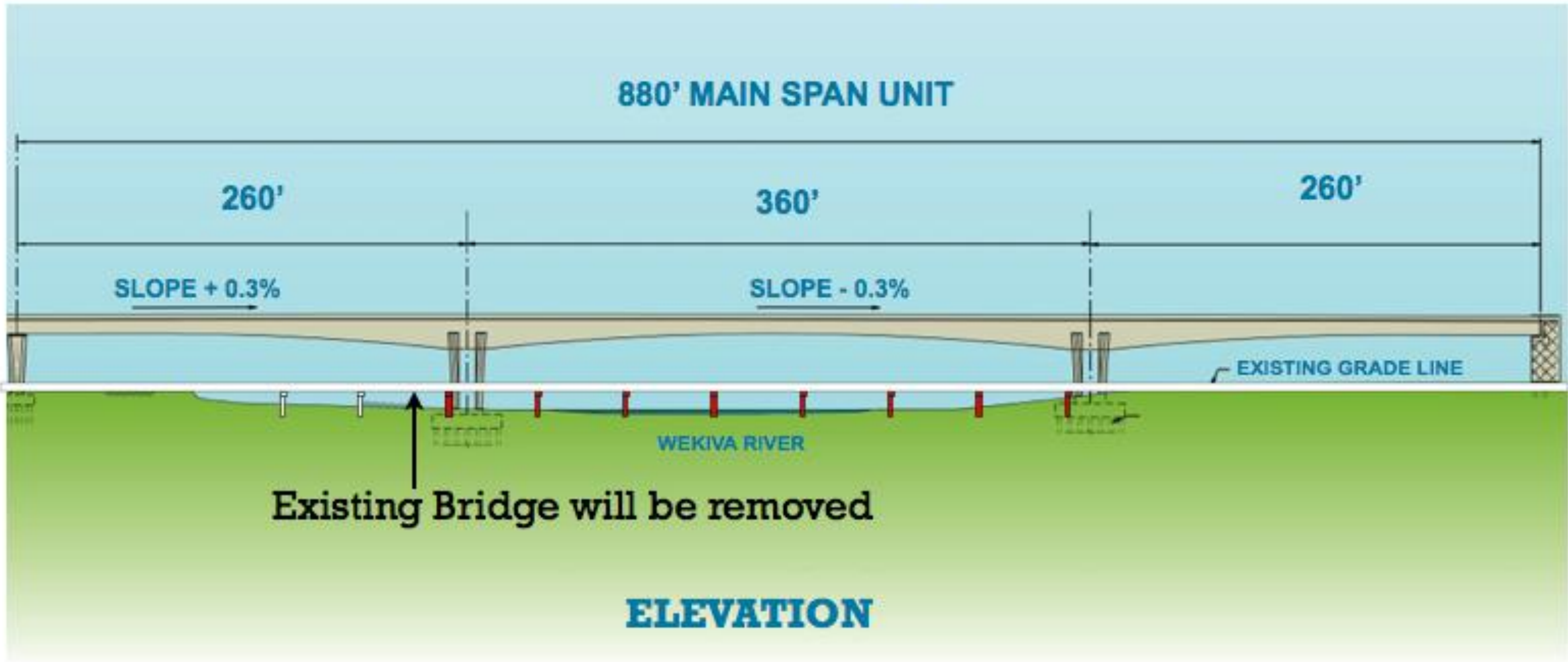
- LEGEND
- L.A. Right-of-Way
 - R.E. Walls
 - Bridges
 - Ponds
 - To Be Removed

WEKIVA PARKWAY
Orange, Lake & Seminole Counties
July 2012

Section 6 – Bridge Charettes



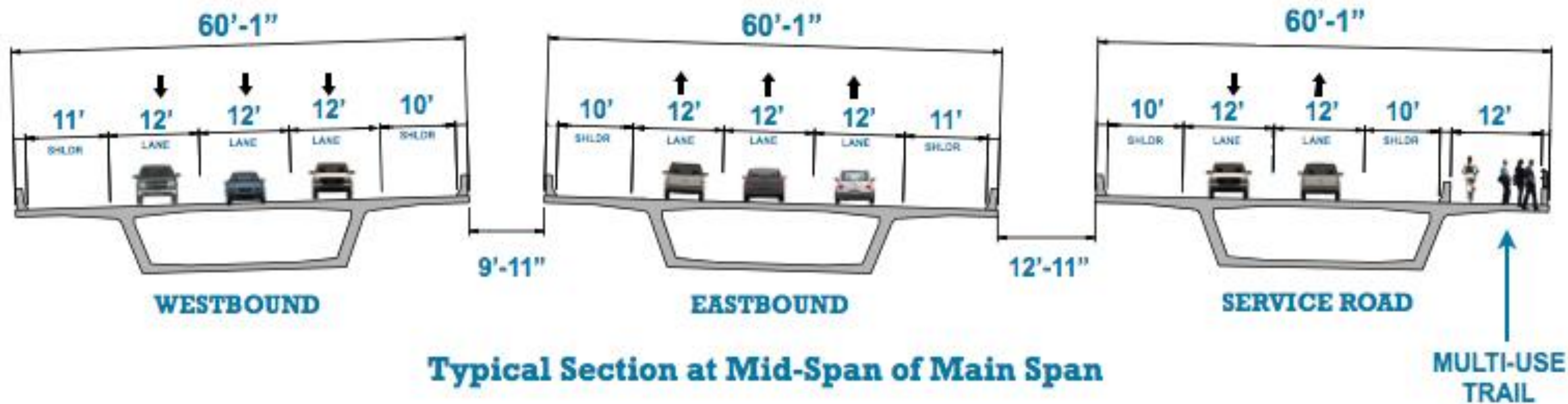
Wekiva River Bridge Concepts



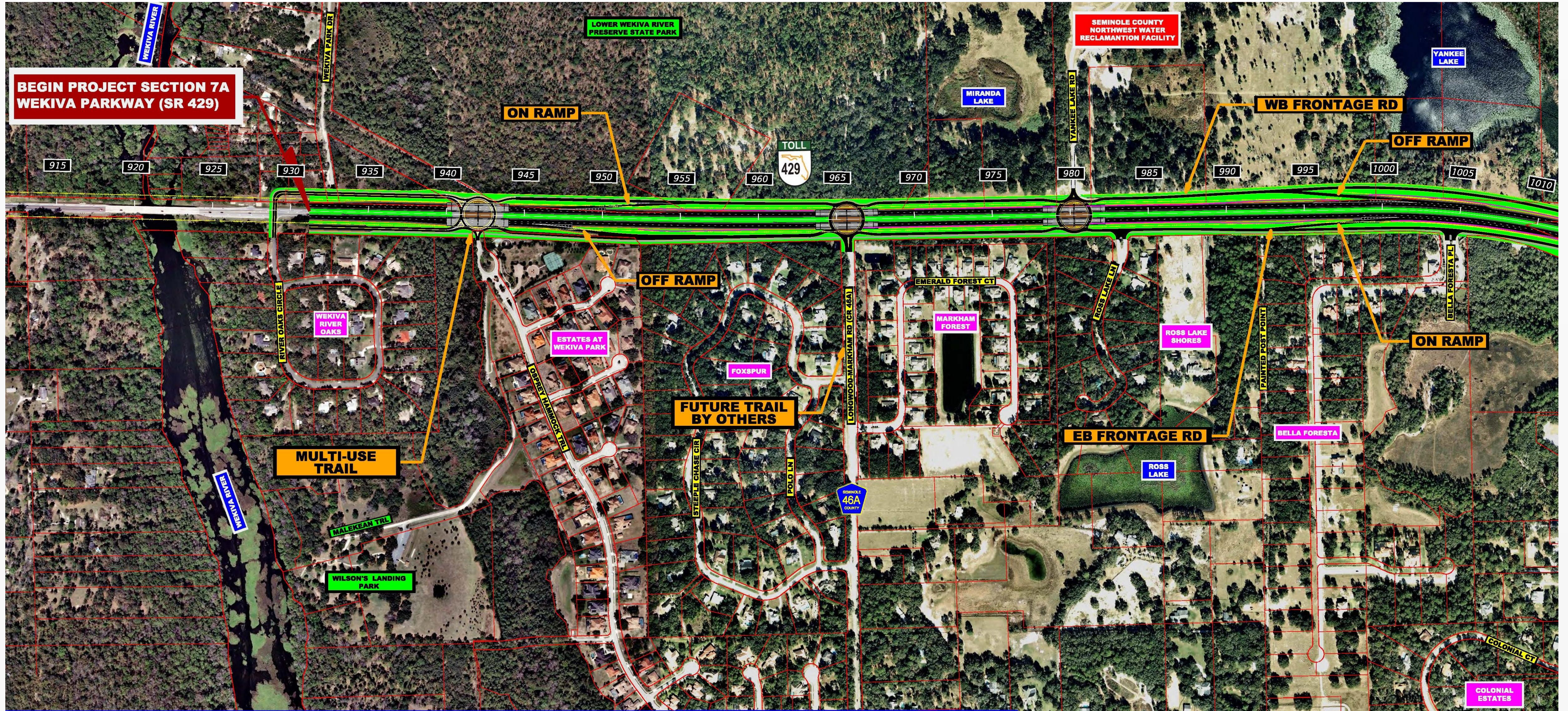
Section 6 – Bridge Concepts




Typical Cross Sections











Section 7A - West



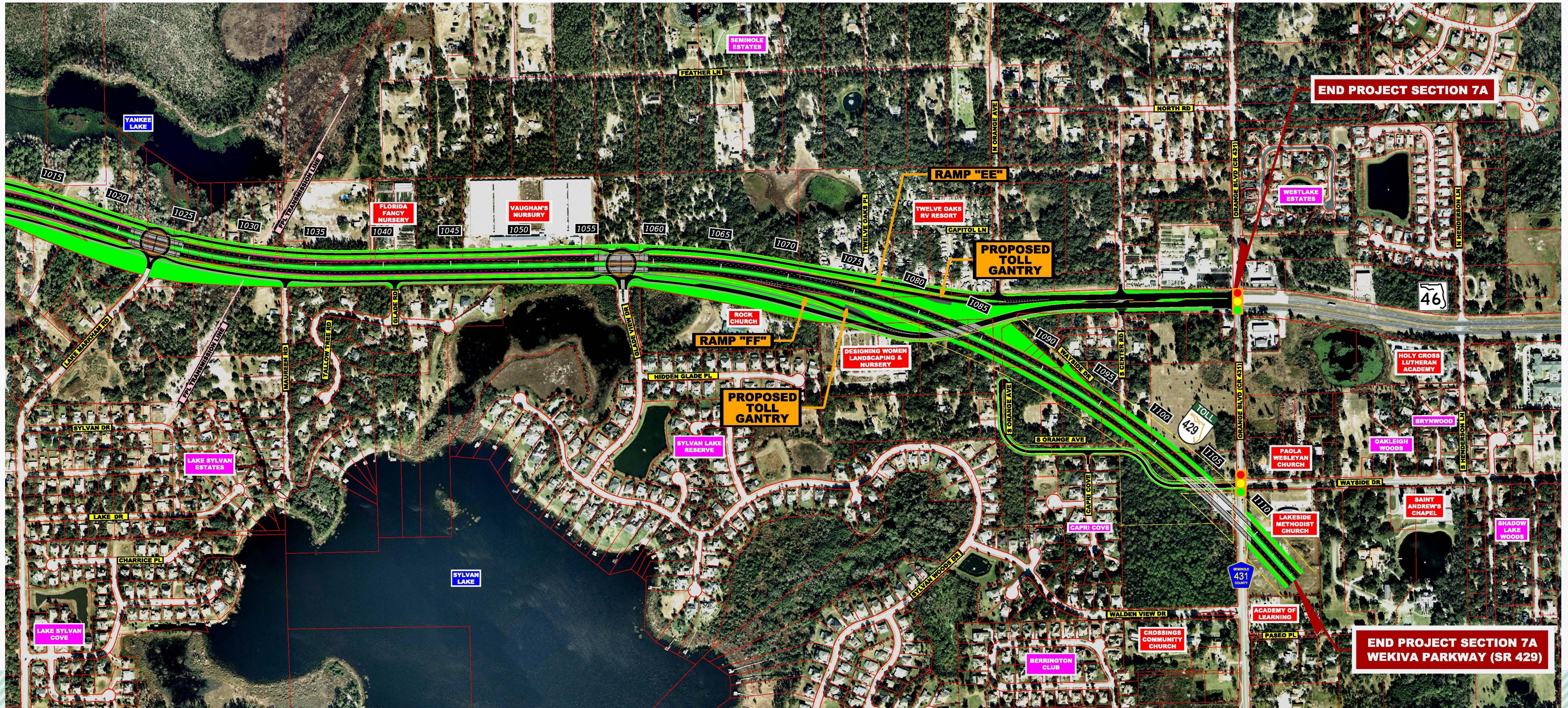

WEKIVA PARKWAY (SR 429)
SECTION 7A

LEGEND

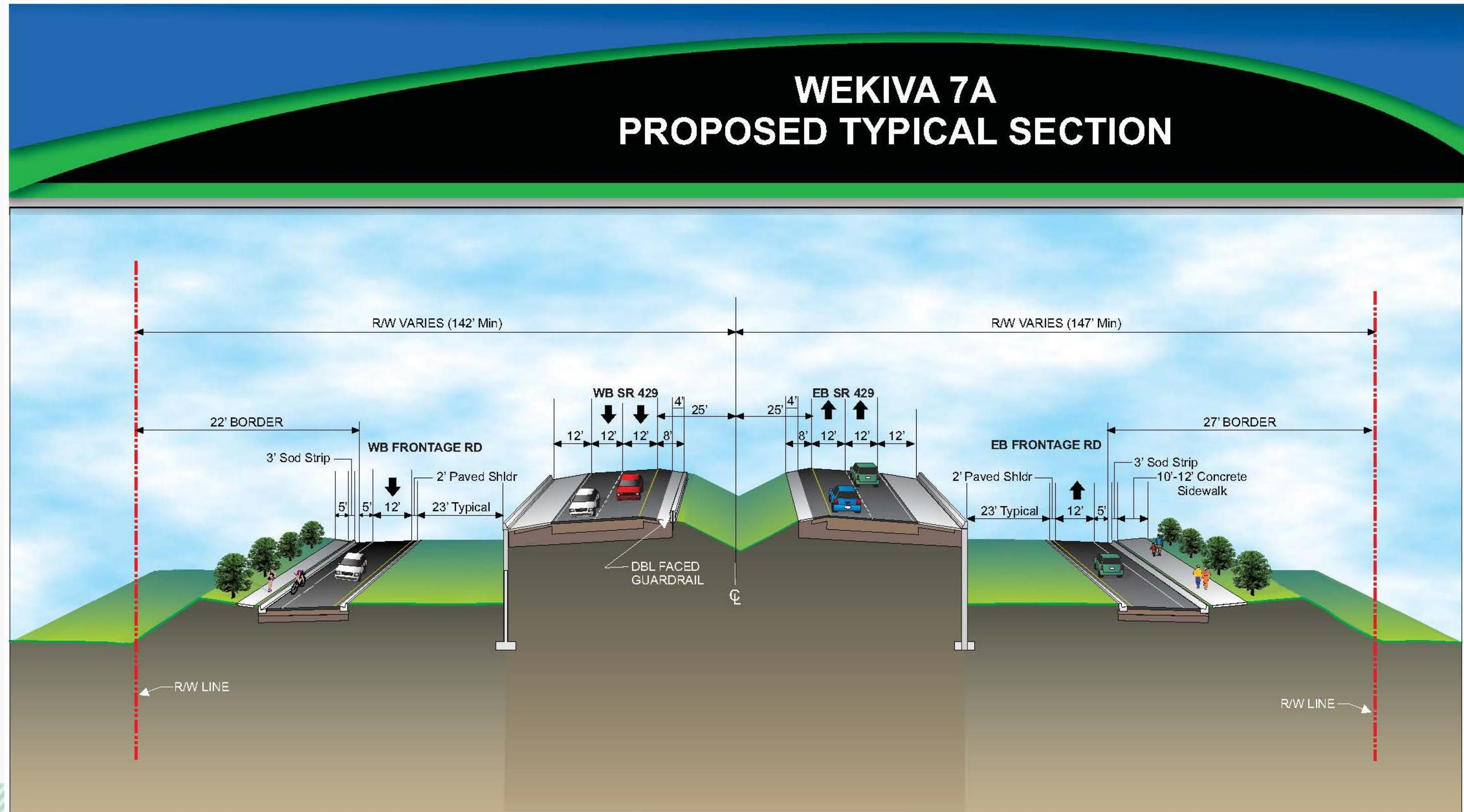
	PROPOSED ROADWAY		SOD		SIGNALIZED INTERSECTION
	PROPOSED BRIDGE		PROPOSED SIDEWALK & SHARED USE PATH		EXISTING ROW & PROPERTY LINE
	PROPOSED L/A ROW		PROPOSED ROW		



Section 7A - East



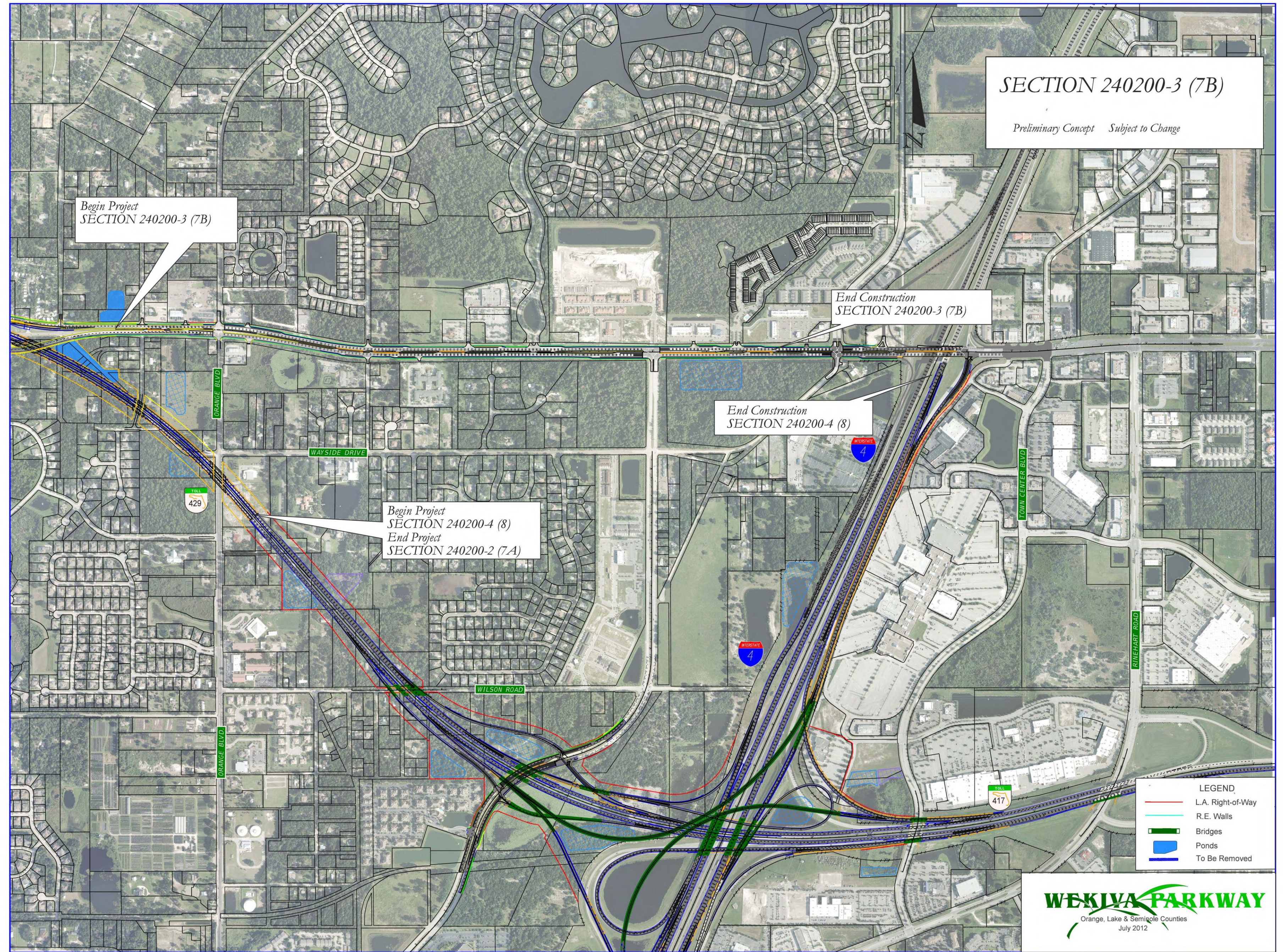
Section 7A – Typical Section



**Section 7A –
Public Meeting
Nov. 12, 2013**



Sections 7B & 8



What's Next?

- **Final Design Continues**
- **Opportunities for Community Input**
 - ✓ **Public Meetings: Section 5 & 6 – April 29-30, 2014**
Section 1A & 1B – Summer 2014
 - ✓ **Community Presentations**
- **Section 4A & 4B Open to Traffic – Late 2014**
- **Sections 1A & 1B Construction – Start Late 2014/Early 2015**



For More Information:

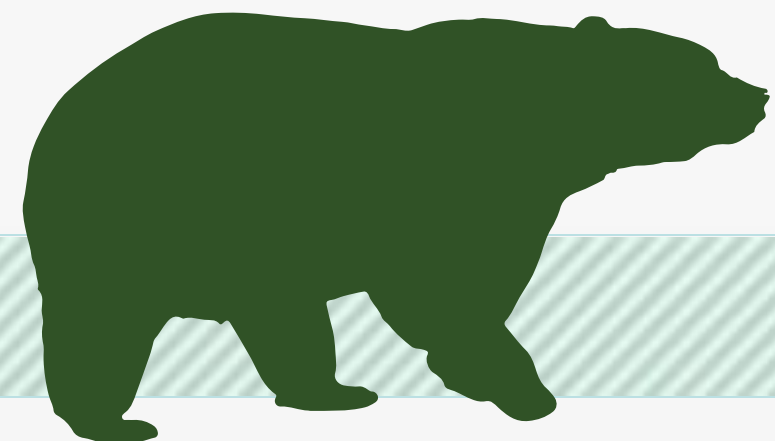
Mary Brooks

Public Involvement Coordinator

C: 407-694-5505

E: Info@wekivaparkway.com

W: www.wekivaparkway.com



WEKIVA PARKWAY
Completing Central Florida's Beltway

TOLL 429

HOME | FDOT PROJECTS | OOCEA PROJECTS | PROJECTS BY COUNTY | PROJECT HISTORY | FAQ | CONTACT US

WELCOME

On behalf of the Florida Department of Transportation and the Orlando-Orange County Expressway Authority, thank you for your interest in the Wekiva Parkway design and construction projects. The Wekiva Parkway (State Road 429) is a cooperative effort between these agencies and the Florida's Turnpike Enterprise.

The Wekiva Parkway (SR 429) would connect to SR 417, completing the beltway around northwest metropolitan Orlando. This estimated \$1.5 billion project includes \$500 million of non-toll road improvements including:

- Building seven (7) miles of four- and six-laning of SR 46 in Lake and Seminole Counties
- Rebuilding the US 441/SR 46 interchange in Mount Dora
- Relocating the CR 46A connection to SR 46 to provide improved wildlife connectivity and additional local road system benefits

[Click here](#) to view the overall project schedule. Please understand schedules are subject to change due to a host of variables.

WEKIVA PARKWAY PROJECT SECTION MAP

Click on a Section Number for Project Details.

[Click here to view larger map](#)

The 25-mile tolled expressway will provide travel alternatives and relieve US 441, SR 46 and other area roads of traffic congestion resulting from growth and travel between Orange, Lake and Seminole Counties.

Authorized in 2004 by the Wekiva Parkway and Protection Act (Chapter 369, Part III, F.S.), this expressway has been heralded as a shining example for transportation planning through an environmentally sensitive area. Development of the Wekiva Parkway has included setting aside more than 3,400 acres of

LATEST NEWS

Click on text for details

August 2013
OOCEA Reaches 60% Design Plans on Section 2A

July 2013
FDOT Kicks Off Design for Section 7A

July 2013
Gov. Scott Kicks Off Wekiva Parkway - July 10, 2013

July 2013
150 Attend Section 3A & 3B Public Meeting Open House - July 11, 2013

June 2013
Nearly 200 Attend FDOT Section 8 Public Meeting - June 11, 2013

May 2013
Lake Co. Commissioners Adopt Recommended CR 46A Alignment

PUBLIC MEETING - Sections 3A & 3B Preliminary Design Open House Reop

PROJECT DOCUMENTS

PRESENTATIONS

PRESS RELEASES

All News

CONTACT US

Mary Brooks
Public Information Officer
Info@wekivaparkway.com
407-694-5505



WEKIWA PARKWAY

Completing Central Florida's Beltway



Thank You!
Questions?

